

aqigo



**Aqigo V2**  
**Product Manual**  
**產品說明書**

**Thank you for purchasing the**  
**Aqigo V2 Air Purifier**

**Questions or Concerns?**

If you have any questions or concerns, please reach us at [www.aqigo.com/contacts/](http://www.aqigo.com/contacts/) or whastapp **+852 5415-7221**

**Office Hour:**

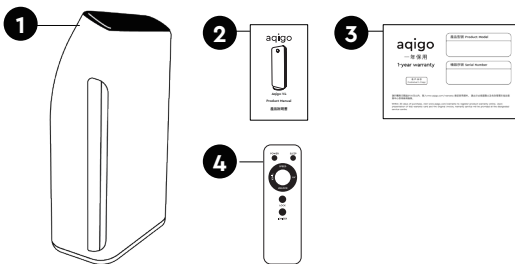
Mon-Fri (10am-6pm UTC+8)

**Thank you and we hope you  
enjoy your new purifier!**

# Contents

---

1. Product Specification.....	01
2. Product Structure.....	02
3. Description of parts and components.....	03
4. Filter Installation Procedures .....	06
5. Clock Setting Flowchart.....	07
6. Filter Replacement Procedures.....	08
7. Maintenance.....	09
8. Correct Placement Position.....	10
9. Important Safety Instructions.....	10
10. Troubleshooting.....	12



## Package contains:

- 1** Aqigo V2 purifier
- 2** User manual card
- 3** Warranty card
- 4** Remote control

# Product Specification

---

Model Name	Aqigo V2
Applicable Area	460 Square Feet
Color	White
Dimension	370×195×650mm

---

Net Weight	8kg
Voltage	220V
Frequency	50Hz
Rated Power	80W
CADR	320 m <sup>3</sup> /h

---

Noise Level	20–52dB
Anion Concentration	20million/cm <sup>3</sup>
Filters Out H3N2 Virus	>99.9%
Filters Out Bacteria	>99.9%
PM2.5 Removal	>99%

---

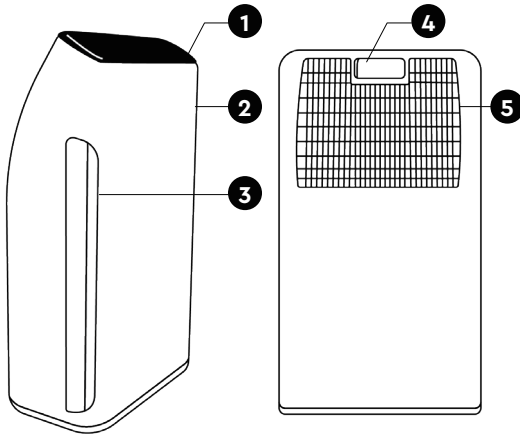
Six Layer Filtration	<ol style="list-style-type: none"><li>1. Antibacterial Filter</li><li>2. HEPA Filter</li><li>3. Cold Catalyst Filter</li><li>4. PACO Filter</li><li>5. Sterilizing UV light</li><li>6. Anion Purifier</li></ol>
Recommended HEPA Filter Life Time	6 months
Recommended PACO Filter Life Time	12 months

---

Features	Child lock + Timer + indicate and provide real time feedback for PM2.5 + Touch panel + Sleep mode
Control	Touch panel + Remote control

# Product Structure

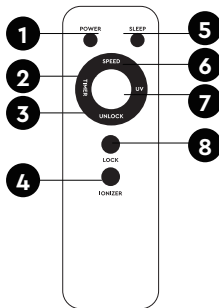
---



## Aqigo V2 Body

---

- 1 Control Panel
- 2 Front Panel
- 3 Air Inlet
- 4 Handle
- 5 Air Outlet



## Remote Control

---

- 1 Power
- 2 Timer
- 3 Unlock
- 4 Ionizer
- 5 Sleep
- 6 Speed
- 7 UV
- 8 Lock

# Description of parts and components

## LED display



**Green LED**  
Good indoor air quality.

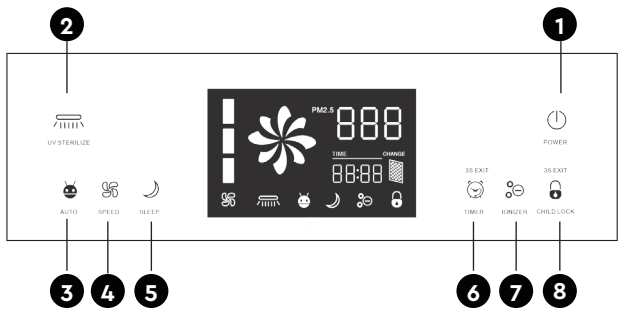


**Yellow LED**  
Air quality is fair.



**Red LED**  
Air quality is bad.

## Control Panel



### Powering On/OFF

**1**

#### Switch Mode

Touch the power button at standby mode. Machine will operate according to last setting. (Not including timer and sleep mode.)

Machine will go into standby mode after pressing the power button when it is operating manually. It will record the current operation setting at the same time.

Remark: Machine won't turn on when filter plate is removed panel or machine falls down.

### Selecting the Operating Mode

**2**

#### UV Sterilize

UV sterilize will on/off after pressing this button when machine is operating. Icon will be on/off at the same time. Motor will turn on and stay low speed mode if you press this button at standby mode.

**3**

**Auto**

Press auto button on the control panel, machine will switch to auto mode, "Auto" indicator will be on.

Under this mode, according to the degree of air pollution, automatic to start work, air volume automatically adjust.

PM2.5<60	Low speed
60≤PM2.5<150	Medium speed
PM2.5≥150	High speed

**4**

**Wind Speed**

Press this button to adjust the motor speed at Low(500RPM), Medium(700RPM), High (900 RPM) and let the machine exit auto mode. The motor speed won't control by sensor if it's modified without permission.

**5**

**Sleep**

The display panel and light will be turned off when sleep mode is activated. Motor only work at low speed.Timer is available at this mode. Machine will enter standby mode after the count-down has finished.

Press any button to exit sleep mode.

**6**

**Timer**

Press this button to set the working time. Every pressing will increase 30 minutes. It will recycle after 12 hours. You can press 3 seconds to exit this mode. The machine will go into standby mode and exit timer mode if you press this button but machine not at purifying mode.

(Display panel will show 00:30 1:00 1:30 2:00 2:30.....)

**7**

**Ionizer**

Ionizer will on/off when press this button. The icon will light up accordingly. Motor will turn on and stay low speed mode if you press this button at standby mode.

8

### **Child Lock**

All button will be disable when child lock is pressed. Child lock icon will light up. Press this button for 3 seconds to exit this mode.

9

### **Accumulated Working Time**

Press child lock for 5 seconds when the machine is at normal working mode (child lock mode is not activated), it will show accumulated working time of the filter. It will disappear after 3 seconds.

## **Remote Control**

The product is equipped with remote control, use the button cell (If don't use the remote control for a long time, please take out the battery)

Note: The buttons on the remote control, the corresponding buttons on the operation panel, function and operation method are exactly the same.

## **Time setting**

Setting method, press the smart key for 5 seconds, time display:

Hour" digits flashing, press the speed key to add 1, press the sleep button to subtract 1, set "Hour" and then click the smart key again, "Minutes" digits in flashing, press the speed button to add 1. press sleep mode to subtract 1. (Press smart key back and forth for hours and wind speed. Press the wind speed and the sleep button to add or subtract set.)

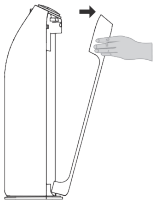
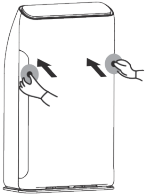
Note:

- The clock function of this machine is completely independent, time display function accuracy or not does not affect the purification.
- The battery powered by the circuit board of the machine, it will consumption in the case of the machine is not plugged in. The battery is designed for the latest 10 days standby, it runs out of battery for more than 10 days, the clock function automatically reset. We need to set the clock again.  
(Refer to the back of the clock setting process)

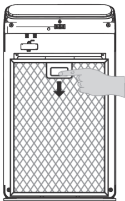
# Filter Installation Procedures

## 1. Take Out filter from Machine

### A. Open the cover



### B. Take out the filters

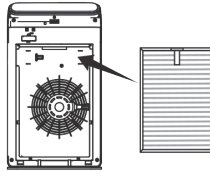


### C. Remove all packaging material



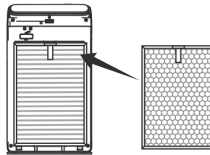
## 2. Install filter and Front panel

### A. Install filter 3 (PACO + Cold catalyst filters)



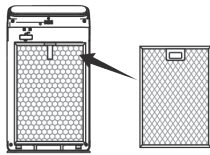
**Attention:**  
Please ensure the tab side is facing you.

### B. Install filter 2 (HEPA filters)



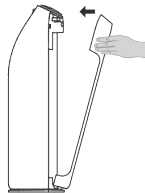
**Attention:**  
Please ensure the tab side is facing you.

### C. Install filter 1 (Antibacterial filter)

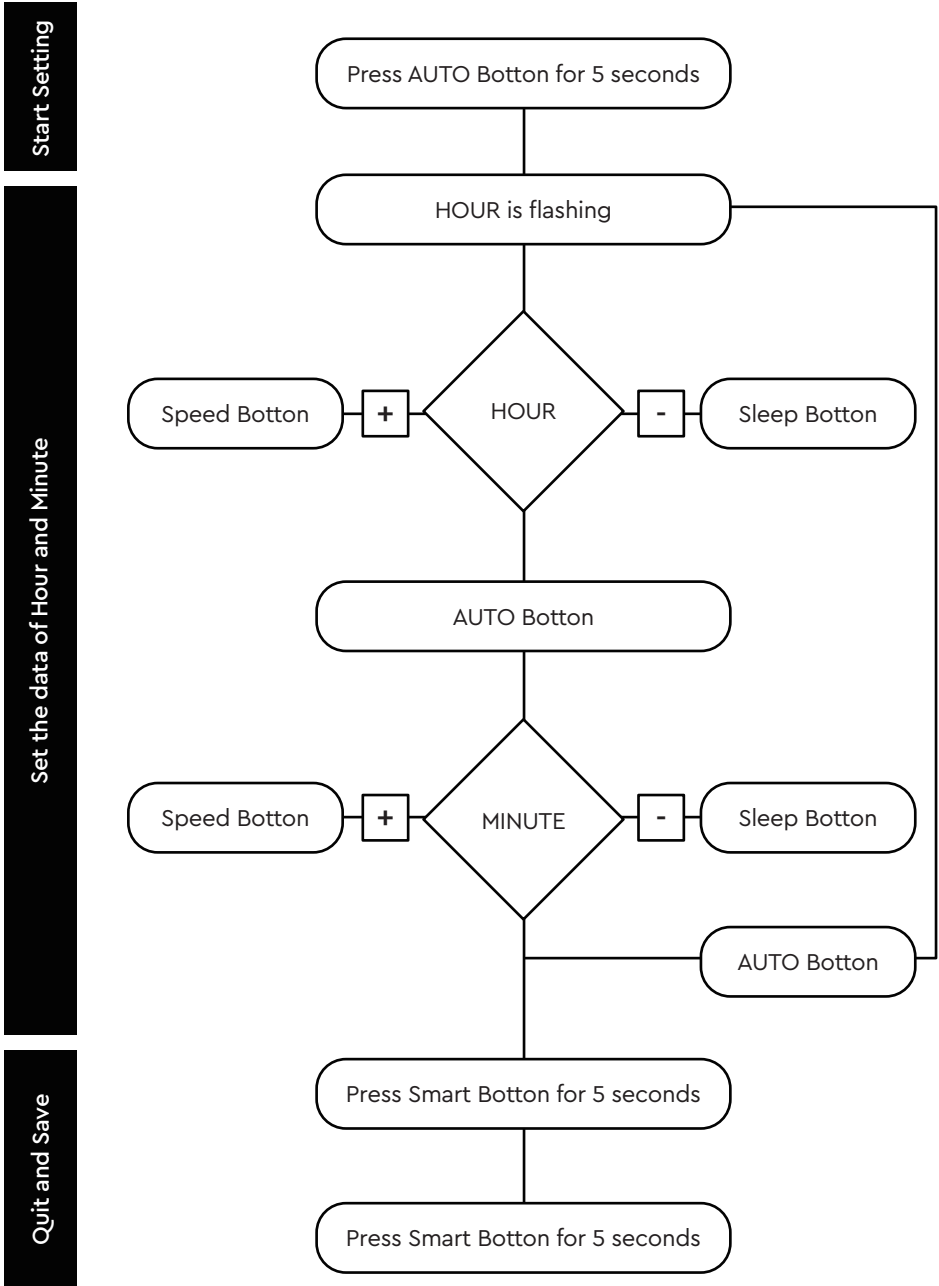


**Attention:**  
Please ensure the handle side is facing you.

### D. Install front plate

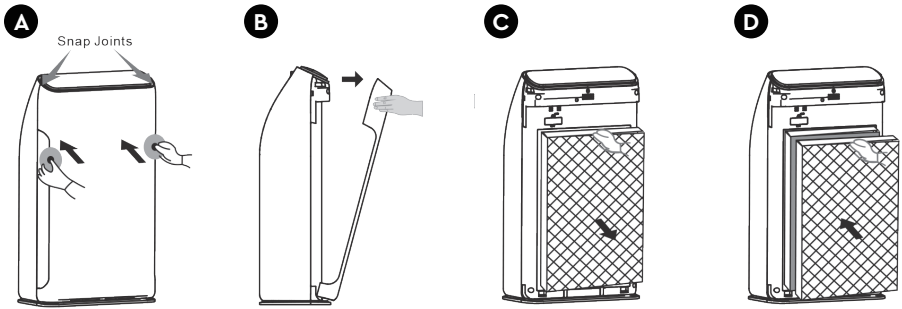


# Clock Setting Flowchart

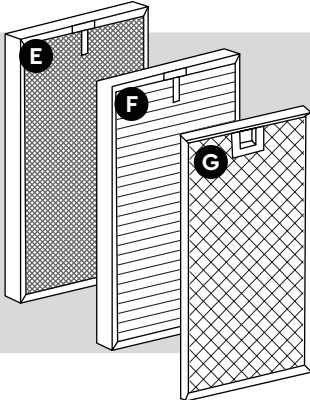


\*When Setting is done,SECOND setting is 00,and the clock move from current hour.

# Filter Replacement Procedures



- A** Press the middle of front panel to make the upper button out of its position.
- B** Pull out the front panel
- C** Take out the filters one by one
- D** Fill in new filters one by one in a correct consequence



- E** PACO filter  
Suggest to replace in every 12 months
- F** HEPA filter  
Suggest to replace in every 6 months
- G** Antibacterial filter

## Filter change reminding reset

The machine has filter change reminding function. It's set at 1500 hours. Please press child lock button for 5 seconds if you wish to reset this function.

## HEPA filter

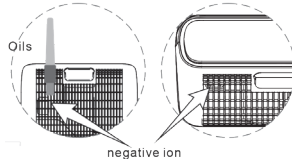
- Replace the filter every 12 months.
- Hold the frame of filter gently.
- Do not expose under strong sunshine.
- Do not use water to clean the filter.

## PACO filter

- Replace the filter every 6 months.
- Hold the frame of filter gently.
- Do not expose under strong sunshine.
- Do not use water to clean the filter.

## Negative Ion Generator

When you hear the machine with a creak sound, use the brush pen as cleaning tool to clean the dust around the negative ion.

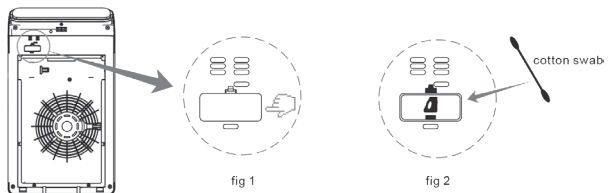


## Particle Sensor (Every 2 months)

- With a dry cotton swab and regular cleaning the lens to remove the moisture and smoke, remove the outer cover of particle sensor (fig 1), use the dry cotton swab to clean the lens (fig 2).
- Please ensure to disconnect the power before cleaning.
- Irradiated with light when it can't see clearly.

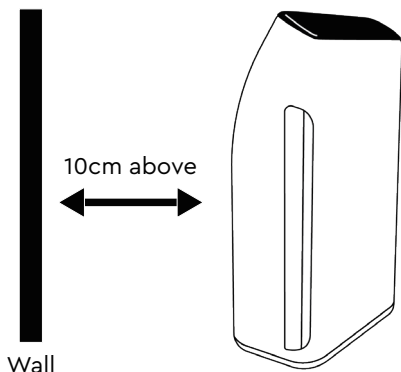
### Tips

- Ensure to disconnect the power before cleaning and maintenance
- Do not open the machine when it removes the filter
- Please unplug power if the machine is not in use in long time
- According to the use of places and methods (e.g. The family with many of smokers or the place with serious pollution), the filter life will be shortened. Please replace the filter in time.



## Correct Placement Position

---



The air inlet of machine should keep a certain distance from the wall and other blockage.

**Note:**

When using the purifier, it is recommended to close the doors and windows to achieve better purification effect. If you want to move the product, please only lift the product with hidden handlebars on both sides.

## Important Safety Instruction

---

### Attention

#### Precaution in placement

- Use in flat and firm place to avoid dumping, short circuit, leakage, fire and so on.
- Avoid short circuit, fire and other reasons where water is not easily accessible.
- Do not place water containers on the body of the machine to avoid water seepage inside the machine causing insulation damage, leakage, short circuit, fire, etc.
- Do not use in places where oil or flammable gas may leak, so as to avoid fire caused by leakage.
- For indoor use, do not use in places with direct sunshine and access to rainwater.

### Warning

#### Cautions in use

- Before you use, please make sure the plastic package of filter is removed.
- Do not block the air inlet and outlet of this product to avoid overheating inside the machine.

- Do not use outside rated voltage (AC220240V/50Hz). Use outside rated voltage will damage the internal parts of products and cause short circuit, fire and other reasons.
- Do not place next to heater, there is the possibility of fire caused by melting the body.
- Do not disassembly of products for transformation to avoid fire, leakage, injury.
- Pull out the power plug without using it for a long time.
- Do not move the product during the working process of the machine to avoid leakage of electricity.
- Do not touch the power plug with wet hand.
- Don't damage the power cord or socket. Don't cut, refit, excessively twist and drag the power cord. Don't lay heavy objects on the power cord. Otherwise, the power cord may be over heated, and it may cause fire. To repair the power cord or plug, please contact aqigo customer service.
- Don't drag the power cord when moving or storing the appliance.

## **Warning**

### **Cautions in use**

- When cleaning products or replacing filters, pull out the power plug
- After the machine stops running for 3 minutes, the front panel can be opened to avoid damage caused by the inertia of the wind wheel.
- Do not sit on the body of the machine to avoid injury caused by tilting or turning over.
- If the soft wire of the power supply is damaged, in order to avoid danger, it must be replaced by a manufacturer or maintenance department or similar full-time personnel.

# Troubleshooting

---

## **1. Cannot turn on or key has no response.**

- i. The power cord is plugged in?  
Plug in the power.
- ii. The machine front plate is covered?  
Cover the front plate
- iii. The machine is in the Child-lock mode?  
When the display showed "child-lock" lights up, press the "child-lock/ reset" 5 seconds until the light off.
- iv. The machine is put on the flat place?  
Put it on a flat place.

## **2. The air is dirty, but the indicator still show green color, even continuous operation, the indicator is always displayed in red.**

- i. If the machine is put in the place of not easy to adsorbed the dirty air?  
Change the place.
- ii. Particle sensor is dirty?  
Clean the sensor.

## **3. Sound during operation**

- i. The negative ion generator is too much dust?  
Clean the negative ion generator.

## **4. The smell of the outlet to let a person feel uncomfortable.**

- i. Filter is dirty?  
Replace filter .
- ii. Filter for a long time did not change?  
Replace with a new one.

## **5. Not into sleep mode automatically in the night.**

- i. Purifier in manual mode?  
Press "Auto" button on the control panel, make sure enter the Auto mode.

**6. The air quality not improved obviously.**

- i. Have remove the filter bag ?  
Please remove filter bag in use of the first time.
- ii.. Installation order filter is wrong?  
Please check the installation sequence .

**7. Display is showed "F1" or "F2"**

Please turn off the power immediately and contact aqigo customer service.