

aqigo



Aqigo V4
Product Manual
產品說明書

Thank you for purchasing the
Aqigo V4 Air Purifier

Questions or Concerns?

If you have any questions or concerns, please reach us at www.aqigo.com/contacts/ or whastapp **+852 5415-7221**

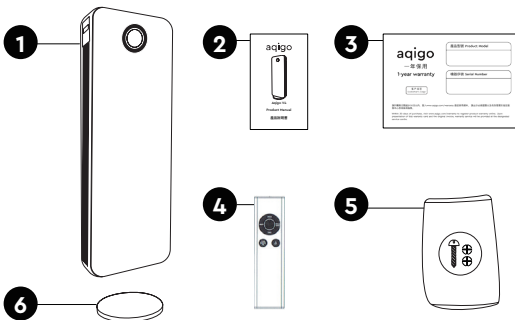
Office Hour:

Mon-Fri (10am-6pm UTC+8)

**Thank you and we hope you
enjoy your new purifier!**

Contents

1. Product Specification.....	01
2. Product Structure.....	02
3. Description of Parts and Components.....	03
4. Installation of Circular Base and Fix	
Power Cord.....	05
5. Filter Replacement Procedures.....	06
6. Maintenance.....	07
7. Correct Placement Position.....	07
8. Important Safety Instructions.....	08
9. Troubleshooting.....	09



Package contains:

- 1** Aqigo V4 purifier
- 2** User manual card
- 3** Warranty card
- 4** Remote control
- 5** One screw package
- 6** One circular base

Product Specification

Model Name	Aqigo V4
Applicable Area	1160 Square Feet
Color	Silver
Dimension	430×127×1217mm

Net Weight	16.5kg
Voltage	220V
Frequency	50Hz
Rated Power	110W
CADR	900 m ³ /h

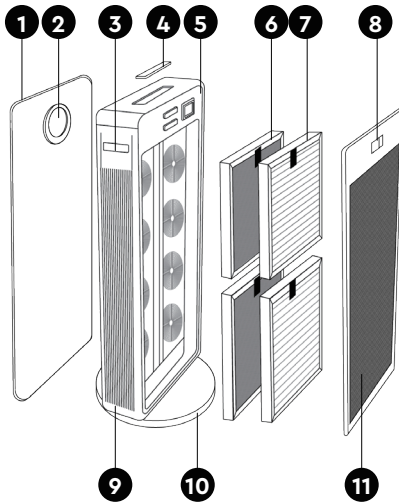
Noise Level	20–58dB
Anion Concentration	60million/cm ³
Filters Out H3N2 Virus	>99.9%
Filters Out Bacteria	>99.9%
PM2.5 Removal	>99%

Six Layer Filtration	<ol style="list-style-type: none">1. Antibacterial Filter2. HEPA Filter3. Cold Catalyst Filter4. PACO Filter5. Sterilizing UV light6. Anion Purifier
Recommended HEPA Filter Life Time	6 Months
Recommended PACO Filter Life Time	12 Months

Features	Filter Replacement Alerts + Child Lock + Indicate and Provide Real Time Feedback for PM2.5 + Timer + Sleep Mode + Automatic Adjustment
----------	--

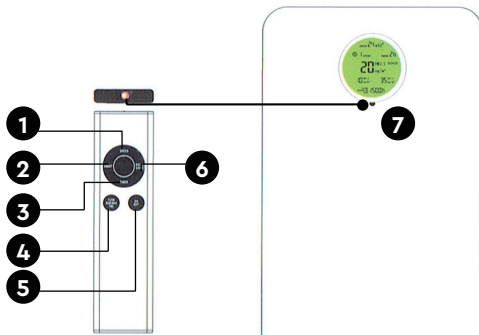
Control	Touch Panel + Remote Control
---------	------------------------------

Product Structure



Aqigo V4 Body

- 1 Panel
- 2 High Definition Display Screen
- 3 Hidden Handles
- 4 Control Panel
- 5 Purifier Body
- 6 PACO Filter
- 7 HEPA Filter
- 8 Net Handle
- 9 Air Outlets on Both Sides
- 10 Base
- 11 Rear Nets



Remote Control

- 1 Speed
- 2 Smart
- 3 Timer
- 4 Filter Remaining Time
- 5 On/Off
- 6 Child Lock
- 7 Receiving Hole

Description of Parts and Components

LED display



Green LED
Good indoor air quality.

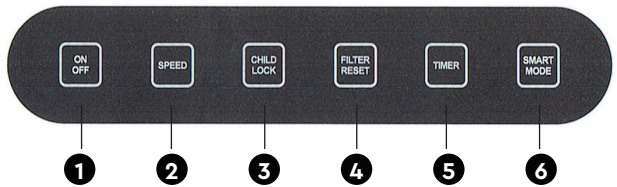


Blue LED
Air quality is fair.



Red LED
Air quality is Poor.

Control Panel



Powering On/OFF

- 1 Switch Mode**
Press this turn to turn on the machine. It will enter standby mode by default.

Selecting the Operating Mode

- 2 Wind Speed**
The default wind speed at boot-up is gear 3. There are 4 wind speed variations.
- 3 Child Lock**
Touch the button to lock all button functions at one time. Press 3 seconds to unlock them.
- 4 Filter Reset**
The initial value of the screen is 1500 hours. When the data of screen "FILTER REMAINING TIME" is less than 60 hours, it will flash to remind the screen to be replaced. After replacing, press the "FILTER RESET" button for 3 seconds to reset.

5 Timer

It works continuously by default, press this button to set the working value, the maximum time is 12 hours.

6 Smart Mode

Press this button to enter smart mode after turning on the machine.

Remote Control

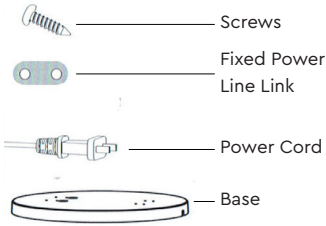
This product uses infrared remote control. Please keep the remote control and remote control receiving window free of object barrier, and try to keep the remote control and receiving window vertical. (vertical remote control distance is less than 5 meters.)

Base

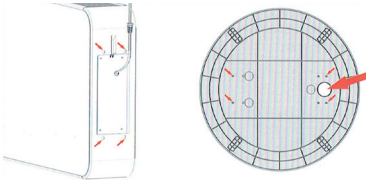
There is anti-skid pad under the base and a strong support device (please place it on the horizontal bottom as far as possible, and do not press anything under it, otherwise it will affect the stability of the whole machine).

Installation of Circular Base and Fix Power Cord

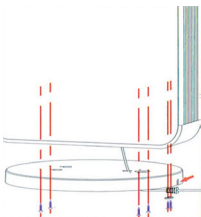
1. Check the accessories.



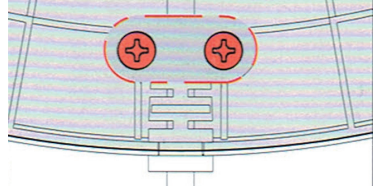
2. Find the bottom of the machine, align the screw hole position, find the largest round hole on the base (as shown by the arrow), and pass the power cord through it.



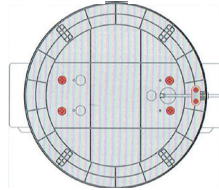
3. After passing power cord through the base, fasten the screws in the respective locations between base and machine.



4. Put the power cord to the recess of the base, use fixed power line link and screws to fix the power cable.



5. The bottom view of the completed base.

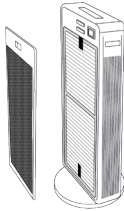


The Completed Base
(Bottom View)

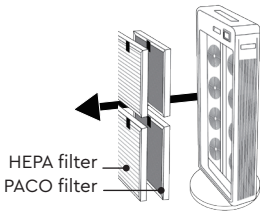
Filter Replacement Procedures

****Before replacing filter, please make sure that the power is off, the plug is not plugged in.**

1. Pull down the back cover by hand and remove the filter cover.



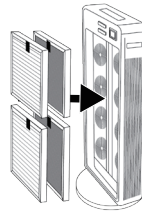
2. Remove the old filter.



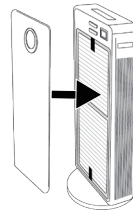
3. Clean the internal chassis and parts.



4. Install a new filter.



5. Put back the lid.



6. Filter replacement completed.



Note: After installation, press the "filter timing" button to reset, and the filter data will be restarted. When the countdown time is less than 60 hours (initial value is 12 hours), the screen sign flickers (Standby lights go out); when the countdown time is 0 hours, then panel filter LED and LCD screen sign flicker (Standby light go out). When the screen key is pressed for 3 seconds, the screen time returns to 1200 hours, the panel filter LED goes out, and the buzzer rings three times. (The key is invalid when the screen sign does not flicker)

The special requirements of screen timing are that when the wind speed is highest, when the air is excellent, the screen time is calculated by one time of the actual time, when the air is lightly polluted, the screen timing is calculated by the actual time, and when the air is heavily polluted, the screen timing is calculated by 7.5 times of actual time.

Filter calculation formula = time x air quality grade x actual working time

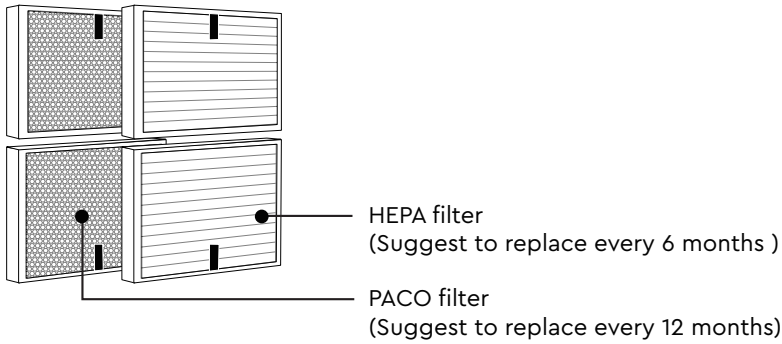
Maintenance

HEPA filter

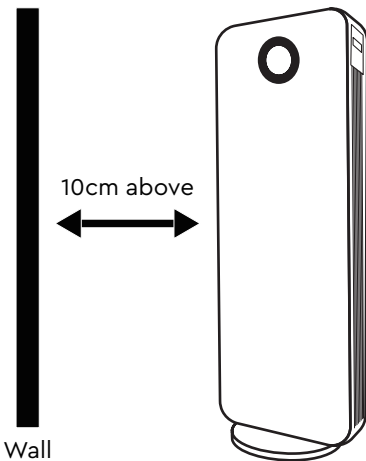
- Replace the filter every 6 months.
- Hold the frame of filter gently.
- Do not expose under strong sunshine.
- Do not use water to clean the filter.

PACO filter

- Replace the filter every 12 months.
- Hold the frame of filter gently.
- Do not expose under strong sunshine.
- Do not use water to clean the filter.



Correct Placement Position



The air inlet of machine should keep a certain distance from the wall and other blockage.

Note:

When using the purifier, it is recommended to close the doors and windows to achieve better purification effect. If you want to move the product, please only lift the product with hidden handlebars on both sides.

Important Safety Instructions

Attention

Precaution in placement

- Use in flat and firm place to avoid dumping, short circuit, leakage, fire and so on.
- Avoid short circuit, fire and other reasons where water is not easily accessible.
- Do not place water containers on the body of the machine to avoid water seepage inside the machine causing insulation damage, leakage, short circuit, fire, etc.
- Do not use in places where oil or flammable gas may leak, so as to avoid fire caused by leakage.
- For indoor use, do not use in places with direct sunshine and access to rainwater.

Warning

Cautions in use

- Before you use, please make sure the plastic package of filter is removed.
- Do not block the air inlet and outlet of this product to avoid overheating inside the machine.
- Do not use outside rated voltage (AC100–240/50–60Hz). Use outside rated voltage will damage the internal parts of products and cause short circuit, fire and other reasons.
- Do not place next to heater, there is the possibility of fire caused by melting the body.
- Do not disassemble machine for transformation to avoid fire, leakage and injury.
- Pull out the power plug without using it for a long time.
- Do not move the product during the working process of the machine to avoid leakage of electricity.
- Do not touch the power plug with wet hand.
- Don't damage the power cord or socket. Don't cut, refit, excessively twist and drag the power cord. Don't lay heavy objects on the power cord. Otherwise, the power cord may be over heated, and it may cause fire. To repair the power cord or plug, please contact aqigo customer service.
- Don't drag the power cord when moving or storing the appliance.

Important Safety Instructions

Warning

Cautions in use

- When cleaning products or replacing filters, pull out the power plug
- After the machine stops running for 3 minutes, the front panel can be opened to avoid damage caused by the inertia of the wind wheel.
- Do not sit on the body of the machine to avoid injury caused by tilting or turning over.
- If the soft wire of the power supply is damaged, in order to avoid danger, it must be replaced by a manufacturer or maintenance department or similar full-time personnel.

Troubleshooting

Fault phenomena	Please check	Processing method
Turn on or off	Whether the plug is in good contact or not	Plug in the power plug
	Whether the rear cover is properly installed	Install the back cover
When the purification function is turned on, the sound is dull and the air outlet is small.	Dismantlement of filter packaging	Remove the package and reinstall it according to instructions
	Is there any foreign matter blocking the outlet or intake?	Turn off the machine and clean up the blocked foreign bodies
Off-flavor	Is there a large number of odor produced temporarily, such as: many people smoke, etc.	After a period of time, the odor gradually disappears
	Does the filter absorbs too much odor and smoke?	Clean or replace filters that need to be replaced
	The composite filter has reached the replacement time accumulatively.	Clean or replace filters that need to be replaced